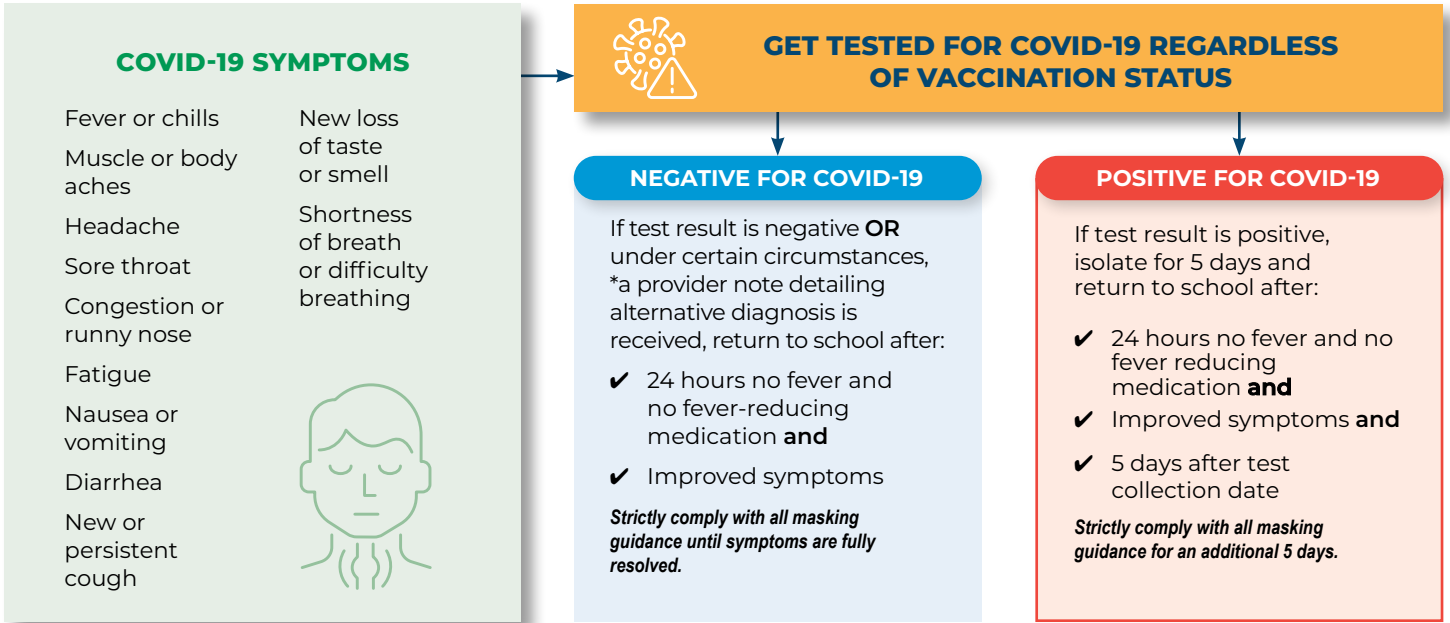


# CRISTO REY COVID-19 POLICY

To report a COVID case or if you have questions, please email [covid19@crphs.org](mailto:covid19@crphs.org).



POSITIVE COVID-19 TEST (PCR OR ANTIGEN)	
NO SYMPTOMS	SYMPTOMS
<p><b>Isolate for 5 days and return to school IF:</b></p> <ul style="list-style-type: none"> <li>✓ 5 days after test collection date</li> </ul> <p><i>Strictly comply with all masking guidance for an additional 5 days.</i></p>	<p><b>Isolate for 5 days and return to school IF:</b></p> <ul style="list-style-type: none"> <li>✓ 24 hours no fever and no fever-reducing medication <b>and</b></li> <li>✓ Improved symptoms <b>and</b></li> <li>✓ 5 days after after test collection date</li> </ul>

*CLOSE CONTACT TO SOMEONE WITH COVID-19 INCLUDES ***HOUSEHOLD CONTACTS	
NO SYMPTOMS	SYMPTOMS
<p><b>For unvaccinated:</b></p> <ul style="list-style-type: none"> <li>✓ Quarantine for 5 days</li> <li>✓ Get tested 5-7 days after exposure</li> </ul> <p><b>For vaccinated and boosted:</b></p> <ul style="list-style-type: none"> <li>✓ Get tested 5 days after exposure</li> <li>✓ No need to quarantine</li> </ul> <p><i>**If it has been more than 6 months since the second dose of your mRNA vaccine or more than 2 months since your J&amp;J vaccine you should quarantine for 5 days.</i></p> <ul style="list-style-type: none"> <li>✓ Strictly following masking guidance</li> </ul> <p><i>Monitor for symptoms for 14 days, regardless of vaccination status. If symptoms develop follow return to school guidance for Close Contact with symptoms.</i></p>	<p><b>Get tested for COVID-19 immediately and regardless of vaccination status.</b></p> <p><b>Return to school IF:</b></p> <ul style="list-style-type: none"> <li>✓ 24 hours no fever and no fever-reducing medication <b>and</b></li> <li>✓ Improved symptoms <b>and</b></li> <li>✓ Test is Negative</li> </ul> <p><i>* Close contact: within 6 feet for 15 minutes over a 24-hour period (regardless of masking)</i></p> <p><i>*** Household contacts may require further investigation, by either PDPH or school officials, to determine dates of quarantine</i></p>

\*Updated 12/30/21